

33rd Annual

MERIDEN THRESHING SHOW

Located 1/2 mile east of
Meriden, Kansas on Hwy. K-4

JULY 17, 18, 19, 2009

COME AND SEE

- The most complete working blacksmith shop in the midwest (circa 1925).
- The Thick and Thin sawmill sawing lumber each day.
- Rare one-cylinder gasoline engines, all sizes and makes.
- Grain threshing; and don't miss the stationary hay baling.
- Fully operational flour mill.

Admire classic and antique tractors, automobiles and trucks.

Watch tractor pulls and parades – Enjoy live country music each night.

Visit the Benedict Meyer log cabin built in 1854 (On KS Register of Historical Places).

Tour the buildings and displays in the living history town of Cottonwood Station.

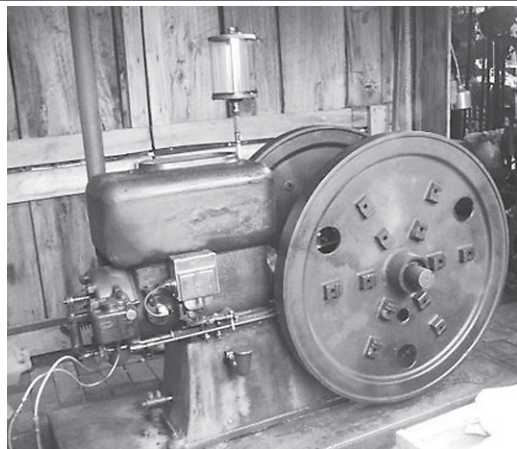


2009 TRACTOR OF THE YEAR

The 2009 Tractor of the Year is a 38-hp, 1951 Case Model D. It is owned by Cassie Knudsen.

2009 ENGINE OF THE YEAR

The 2009 Engine of the Year is an Advance 8-hp. It can be seen in the blacksmith shop run by Gary Bowen.



ADMISSION-\$6

for all three days
Exhibitors—FREE
Kids under 12—FREE
w/paid admission.

SCHEDULE OF EVENTS

Friday—

- Threshing
- 1:30 p.m.—Parade
- 7:30-11 p.m.—Country Music by Sierra (bring your lawn chair)
- 6 p.m.—Garden tractor pull

DON'T MISS!

Garden Tractor Pull
Register at 5 p.m.
Pull begins at 6 p.m.

Saturday—

- 1:30 p.m.—Parade
- 3:00 p.m.—Children's tractor pull in the barn
- 5:00 p.m.—Antique/Classic tractor pull
- Threshing
- 7:30-11 p.m.—Country Music by Sierra (bring your lawn chair)

Sunday—

- 9:00 a.m.—Sunday Service in the Bloomfield Church
- Threshing
- 11:00 a.m.—Slow Tractor Race (w/Three Trophies)
- 1:30 p.m.—Parade
- 2:00 p.m.—Garden tractor pull (bring your lawn chair)

MERIDEN TRACTOR PULL

July 18 • \$10 Hookup Fee

—Weigh-in at 3 p.m. • Pull starts at 5 p.m.

Div. II, Div. III, and Open • Heartland Antique Tractor Puller rules will apply

WEIGHT CLASSES

3500 4000 4500 5000 5500 6000 6500 7000 7500

For more information and rules call: Jessica Rodecap, director 785-484-2477 or 785-224-1831

No ATVs • No dogs without leash • Modern Restrooms • Grounds close at Midnight each day

Not responsible for accidents • Concessions at The Chuckwagon—Breakfast, Lunch, Dinner & Anytime In-Between

Special trophies awarded for "Exhibit Farthest From Home" and "Exhibit with Largest Flywheel"

Trophies awarded Sunday after the parade. • Camping Hookups—Contact Gary Hazelton 785-484-2262

Flea Markets and Crafts Spaces FREE WITH PAID ADMISSION—Contact Jess Noll 785-886-8351

All Operating Steam Engines MUST be registered and approved 30 days prior to the show. Contact Brian Reilly 913-369-3469

Sponsored by The Meriden Antique Engine and Threshers Association

Merlyn Mahoney, President – 785-876-3030 • Jess Noll, Secretary – 913-886-8351

More information at our website www.meridenthreshers.org